

---

LELAND

# M2

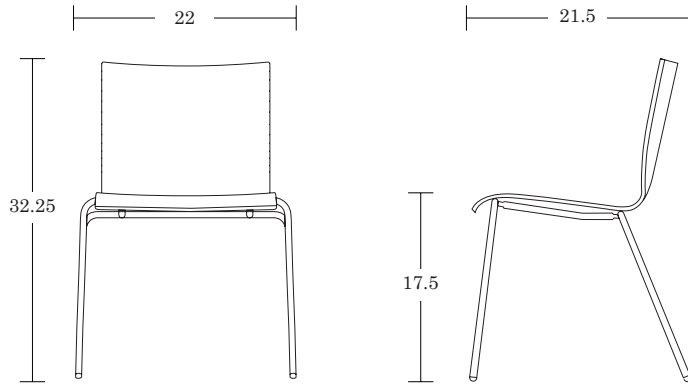
## Specifications & Finishes



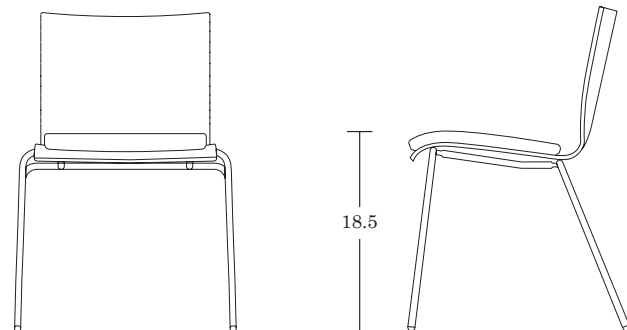
January 2023



### SPECIFICATIONS



Side Chair / M2S



Upholstered Seat/ M2SU

### Veneer Options

Leland Wood Finishes [View transparent](#) / [View semi-transparent](#)

Natural Walnut [View here](#)

Black/Natural Walnut two-tone [View here](#)

### Upholstery Options [View here](#)

(Fabric Approval Required)

Camira

Carnegie

Stinson

Green Hides

Maharam

Unika Vaev

COM/COL

### Shell Options

4 Cut Outs

Plain Black

Custom Cutouts/Engravings

Square

Soft Square

Circle

Rectangle



### Frame Options [View here](#)

Powder Coat and Textured Powder Coat Frame Finishes

Chrome

### Glide Options

Standard (nylon)

Felt

Floor Saver™

Metal

Rubber

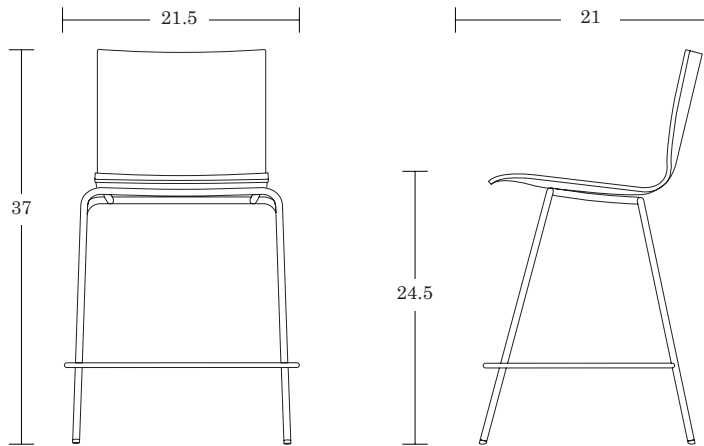
### Additional Options

Load Tested to 500+ lbs

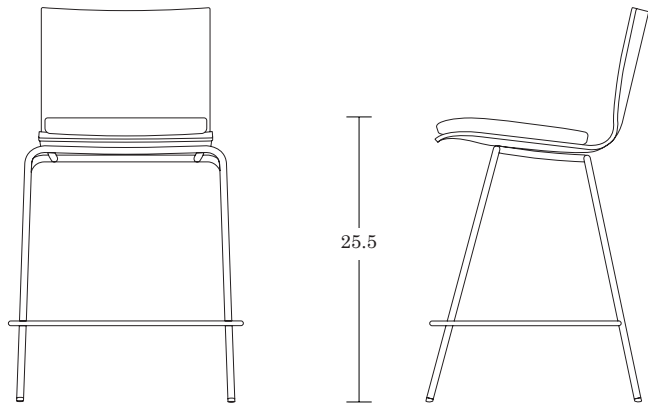
Side chair is a wallsaver

Non-upholstered stacking version stacks 6 high on floor and 10 high dolly

Upholstered stacking version stacks 6 high on floor and 8 high on dolly



Counter Chair / M2C



Upholstered Seat / M2SU

## SPECIFICATIONS

## Veneer Options

Leland Wood Finishes [View transparent](#) / [View semi-transparent](#)Natural Walnut [View here](#)Black/Natural Walnut two-tone [View here](#)Upholstery Options [View here](#)

(Fabric Approval Required)

Camira

Carnegie

Stinson

Green Hides

Maharam

Unika Vaev

COM/COL

## Shell Options

4 Cut Outs

Plain Black

Custom Cutouts/Engravings

Square

Soft Square

Circle

Rectangle

Frame Options [View here](#)

Powder Coat and Textured Powder Coat Frame Finishes

Chrome

## Glide Options

Standard (nylon)

Felt

Floor Saver™

Metal

Rubber

## Additional Options

Stacking Counter Chair stacks 4 high on floor

## SPECIFICATIONS

## Veneer Options

Leland Wood Finishes [View transparent](#) / [View semi-transparent](#)

Natural Walnut [View here](#)

Black/Natural Walnut two-tone [View here](#)

Upholstery Options [View here](#)

(Fabric Approval Required)

Camira

Carnegie

Stinson

Green Hides

Maharam

Unika Vaev

COM/COL

## Shell Options

4 Cut Outs

Plain Black

Custom Cutouts/Engravings

Square



Soft Square



Circle



Rectangle

Frame Options [View here](#)

Powder Coat and Textured Powder Coat Frame Finishes

Chrome

## Glide Options

Standard (nylon)

Felt

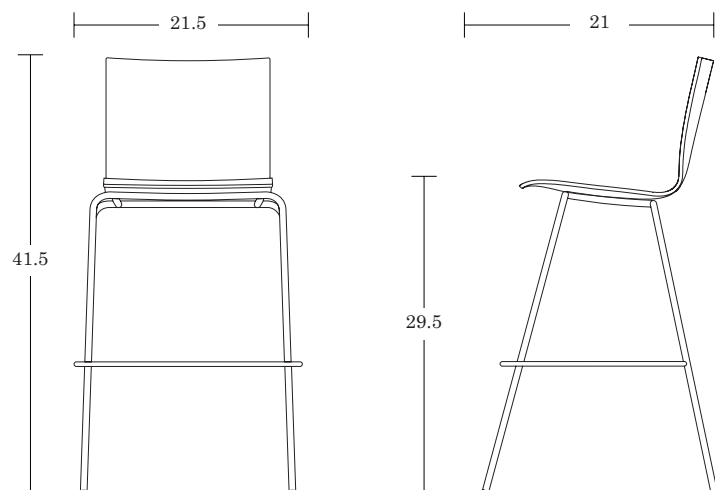
Floor Saver™

Metal

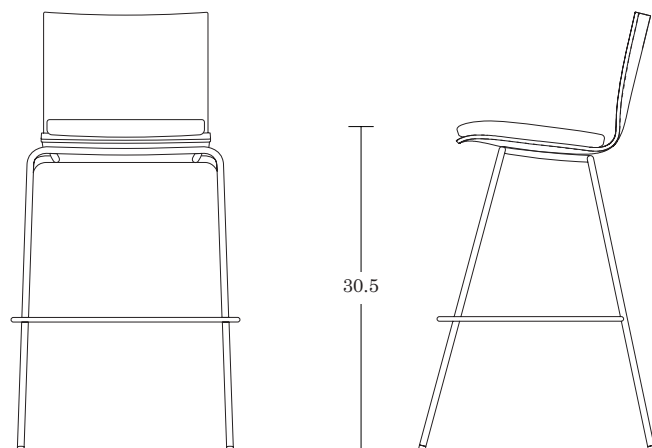
Rubber

## Additional Options

Stacking Bar Chair stacks 4 high on floor



Counter Chair / M2B



Upholstered Seat / M2BU

Transparent Wood Options; *Semi-Gloss Sheen*



Natural  
(11M)



Neutral  
(15M)



Medium  
(13M)



Classic  
Mahogany  
(21M)



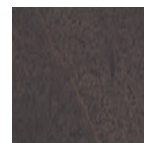
White Wash II  
(30M)



Espresso  
(23M)



Transparent  
Black  
(29M)



Graphite  
(25M)

For SCS certified wood finishes, please refer to the following document: [SCS Certified Wood Finishes](#)

Due to limitations of the color printing process these finish samples should be considered representative only. For larger finish samples, please contact Leland Customer Experience at (800) 859-7510.

Quick Links /

**View Side Chair**

**View Counter Chair**

**View Bar Chair**

## Wood Finish Options



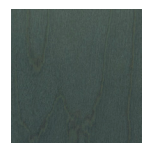
## SEMI- TRANSPARENT &amp; OPAQUE



Oxford II  
(49M)  
100% Opaque



Dolphin II  
(50M)  
100% Opaque



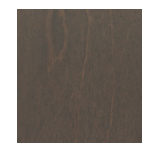
Blue Sky  
(100M)



Forest  
(101M)



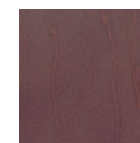
Gravel  
(102M)



Heather  
(103M)



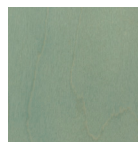
Dawn  
(104M)



Grape  
(105M)



Sienna  
(106M)



Lake Breeze  
(107M)

Quick Links /

**View Side Chair**

**View Counter Chair**

**View Bar Chair**

For SCS certified wood finishes, please refer to the following document: [SCS Certified Wood Finishes](#)

Due to limitations of the color printing process these finish samples should be considered representative only. For larger finish samples, please contact Leland Customer Experience at (800) 859-7510.

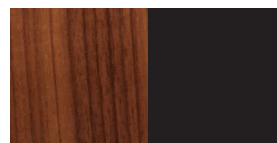


### TWO-TONE NATURAL



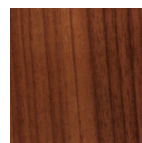
White  
(WHC)

### TWO-TONE WALNUT



Black  
(BCK)

### VENEER



Natural Walnut  
(08M)

Quick Links /  
[View Side Chair](#)  
[View Counter Chair](#)  
[View Bar Chair](#)

Due to limitations of the color printing process these finish samples should be considered representative only. For larger finish samples, please contact Leland Customer Experience at (800) 859-7510.

# M2

Powder Coat

LELAND



Sterling  
(ST)



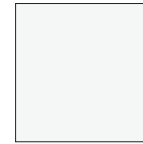
Warm Grey  
(WG)



Cool Grey  
(CG)



Black  
(B)



White  
(W)



Matte Mercury  
(MMR)



Matte Mineral  
(MMN)



Matte Burnish  
(MBN)



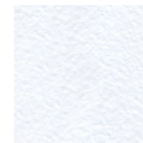
Matte Foundry  
(MFN)



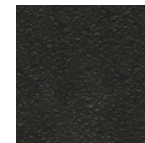
Dolphin Textured  
(DLT)



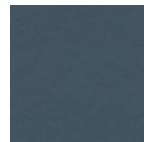
Oxford Textured  
(OXT)



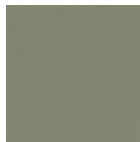
White Textured  
(WT)



Black Textured  
(BT)



Matte Blue Sky  
(MBS)



Matte Forest  
(MFO)



Matte Sienna  
(MSN)



Matte Willow  
(MWL)



Chrome  
(C)

Quick Links /  
[View Side Chair](#)  
[View Counter Chair](#)  
[View Bar Chair](#)

Due to limitations of the color printing process these finish samples should be considered representative only. For larger finish samples, please contact Leland Customer Experience at (800) 859-7510.



---

# LELAND

**5695 Eagle Drive, SE  
Grand Rapids,  
Michigan 49512  
616-975-9260  
[lelandfurniture.com](http://lelandfurniture.com)**