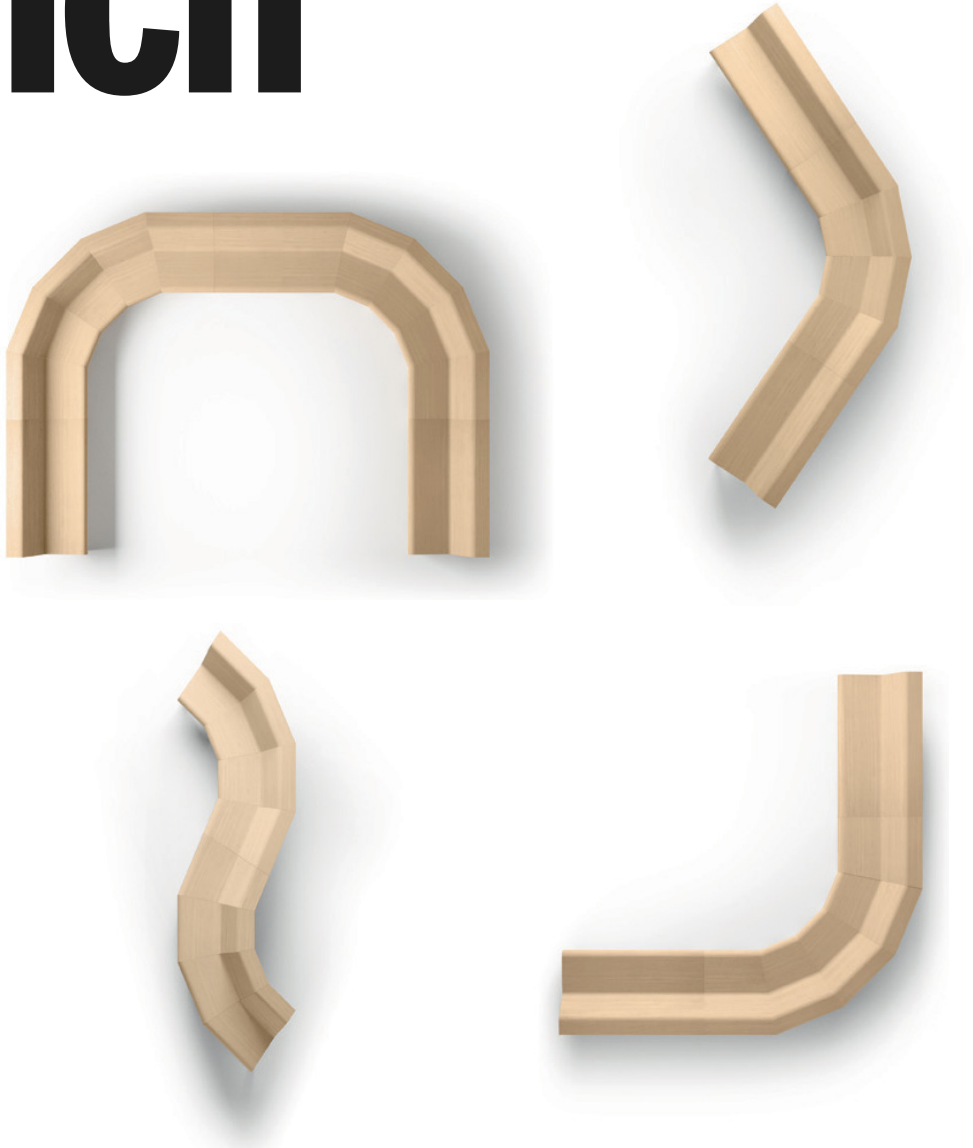


# Back Bench

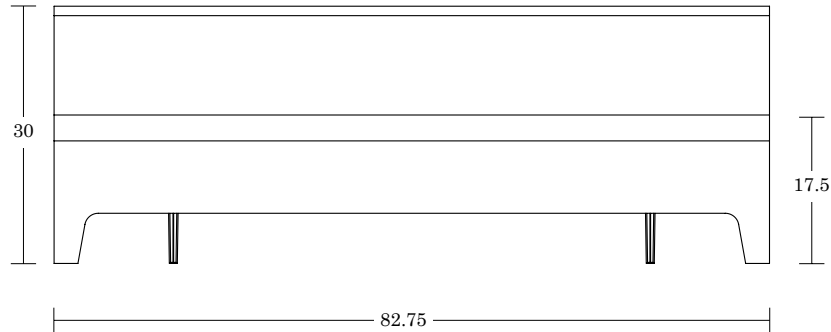
Specifications  
& Finishes



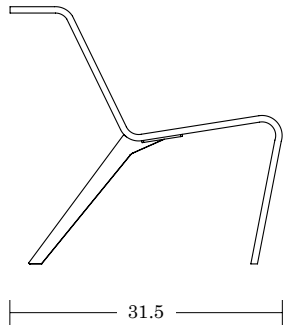
# Back Bench

Wood

LELAND



A3 / AMS



## SPECIFICATIONS

### Veneer Options [View here](#)

Rift Cut White Oak  
5 Stained finishes on White Oak

### Upholstered Front Only Options [View here](#)

(Fabric Approval Required)

Camira  
Carnegie  
Stinson  
Green Hides  
Maharam  
Unika Vaev  
COM/COL

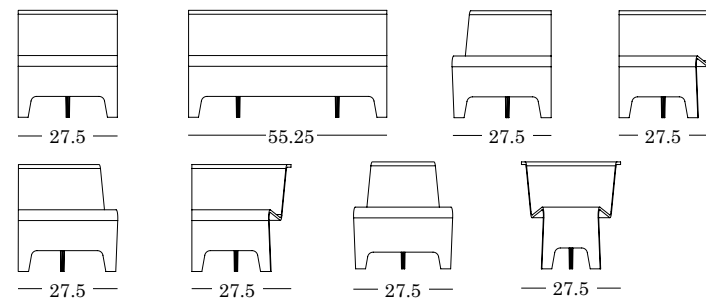
### Leg Finishes [View here](#)

Epoxy Painted Steel: White, Grey, or Black  
Brushed Chrome

### Features

Adjustable Glides  
Metal insert fastening points — (2) mending plates at each joint

### Bench Add Ons [View options here](#)



# Back Bench

LELAND

Veneer

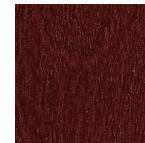


Natural White  
Oak  
(12)

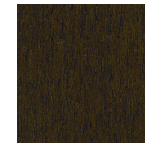
## TRANSPARENT WOOD STAIN OPTIONS ON WHITE OAK



Medium  
(13)



Classic  
Mahogany  
(21)



Espresso  
(23)



Transparent  
Black  
(29)

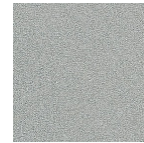
Quick Links /  
[View Spec Page](#)

Due to limitations of the color printing process these finish samples should be considered representative only. For larger finish samples, please contact Leland Customer Experience at (800) 859-7510.

# Back Bench

LELAND

## Base Options



Sterling  
(ST)



Warm Grey  
(WG)



Cool Grey  
(CG)



Black  
(B)



White  
(W)



Matte Gold Rush  
(MGR)



Matte Mercury  
(MMR)



Matte Mineral  
(MMN)



Matte Burnish  
(MBN)



Matte Foundry  
(MFN)



Matte New  
Penny  
(MNP)



Chrome  
(C)

[Quick Links /](#)  
[View Spec Page](#)

Due to limitations of the color printing process these finish samples should be considered representative only. For larger finish samples, please contact Leland Customer Experience at (800) 859-7510.

---

# LELAND

**5695 Eagle Drive, SE**  
**Grand Rapids,**  
**Michigan 49512**  
**616-975-9260**  
**[lelandfurniture.com](http://lelandfurniture.com)**