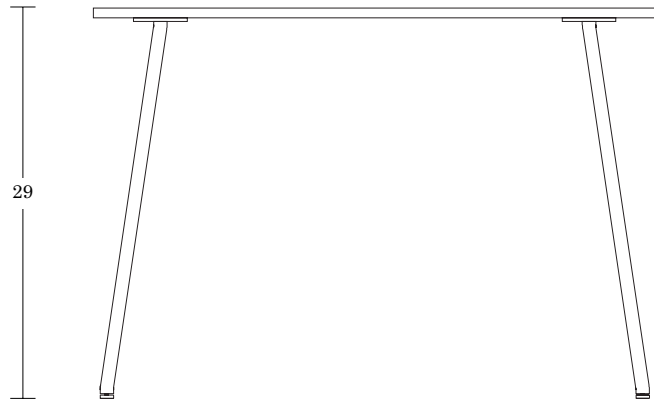

LELAND

Parfait

Specifications & Finishes



June 2020



Four Leg / CP4LB

SPECIFICATIONS

Top Surface Options

Leland Wood Finishes [View transparent](#) / [View semi-transparent](#)

Laminate - Standards from Formica®, Wilsonart®, Pionite®, Nevamar® [View here](#)

Solid Surface

Edge Options [View here](#)

2 Vinyl Edges



3 Wood Edges



Base Options [View here](#)

Powder Coat Frame Finishes

Glide Options

Standard (Black nylon adjustable leveling)

Top Size Options



Circle

36 Dia

42 Dia

48 Dia



Square

36 x 36

42 x 42

48 x 48



Rectangle

24 x 60

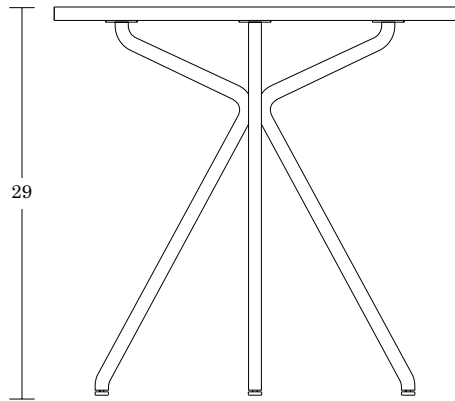
30 x 60

38 x 72

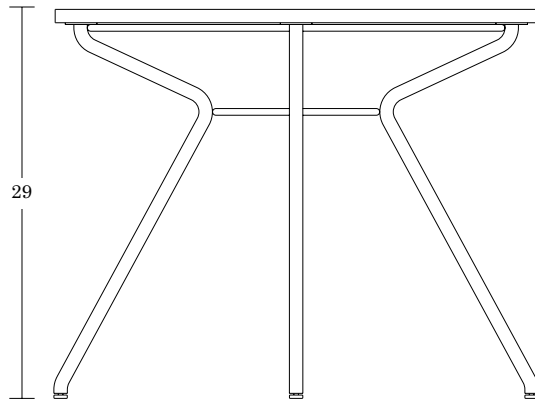
42 x 84

Radiant Base Table

SPECIFICATIONS



Small Base / CPSRB



Medium Base / CPMRB

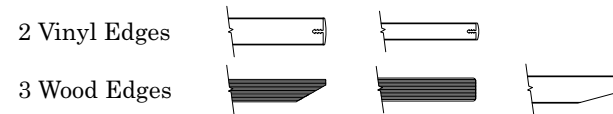
Top Surface Options

Leland Wood Finishes [View transparent](#) / [View semi-transparent](#)

Laminate - Standards from Formica®, Wilsonart®, Pionite®, Nevamar® [View here](#)

Solid Surface

Edge Options [View here](#)






Base Options [View here](#)

Powder Coat Frame Finishes

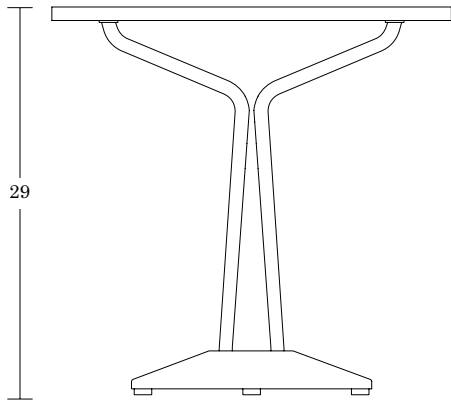
Glide Options

Standard (Black nylon adjustable leveling)

Top Size Options

		
Circle	Square	Rectangle
30 Dia	30 x 30	24 x 30
36 Dia	36 x 36	
42 Dia	42 x 42	
48 Dia		

Dome Base Table



Small Dome Base / CPSDB

SPECIFICATIONS

Top Surface Options

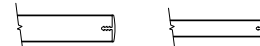
Leland Wood Finishes [View transparent](#) / [View semi-transparent](#)

Laminate - Standards from Formica®, Wilsonart®, Pionite®, Nevamar® [View here](#)

Solid Surface

Edge Options [View here](#)

2 Vinyl Edges



3 Wood Edges



Column Options [View here](#)

Powder Coat Frame Finishes

Glide Options

Standard (Black nylon adjustable leveling)

Top Size Options



Circle

24 Dia

30 Dia

36 Dia

42 Dia

48 Dia



Square

24 x 24

30 x 30

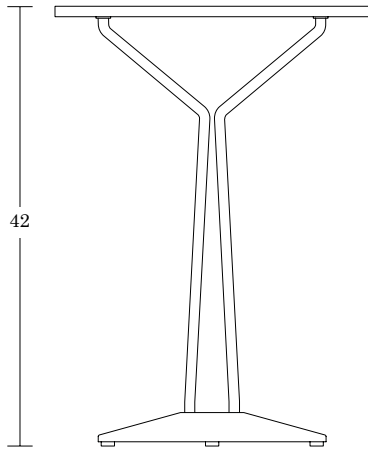
36 x 36



Rectangle

24 x 30

Bar Dome Base Table



Bar Dome Base / CPBDB

SPECIFICATIONS

Top Surface Options

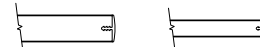
Leland Wood Finishes [View transparent](#) / [View semi-transparent](#)

Laminate - Standards from Formica®, Wilsonart®, Pionite®, Nevamar® [View here](#)

Solid Surface

Edge Options [View here](#)

2 Vinyl Edges



3 Wood Edges



Column Options [View here](#)

Powder Coat Frame Finishes

Glide Options

Standard (Black nylon adjustable leveling)

Top Size Options



Circle

24 Dia

30 Dia

36 Dia



Square

24 x 24

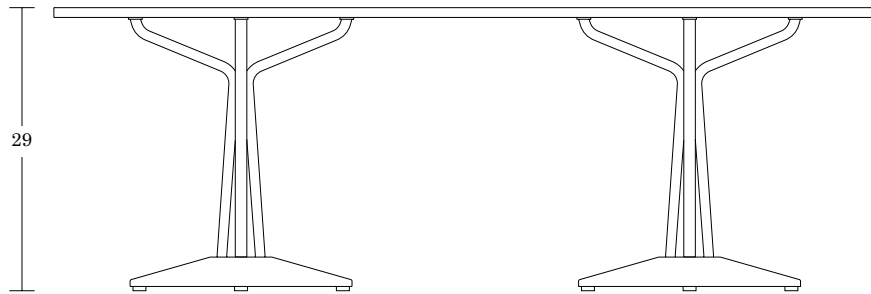
30 x 30



Rectangle

24 x 30

Tandem Dome Base Table



Dome Base / CPTDB

SPECIFICATIONS

Top Surface Options

Leland Wood Finishes [View transparent](#) / [View semi-transparent](#)

Laminate - Standards from Formica®, Wilsonart®, Pionite®, Nevamar® [View here](#)

Solid Surface

Edge Options [View here](#)

2 Vinyl Edges



3 Wood Edges



Column Options [View here](#)

Powder Coat Frame Finishes

Glide Options

Standard (Black nylon adjustable leveling)

Top Size Options



Rectangle

30 x 60

36 x 72

42 x 84



Ellipse

36 x 72E

42 x 84E



Racetrack

36 x 72R

42 x 84R

Parfait

LELAND

Transparent Wood Options; *Semi-Gloss Sheen*



Natural
(11)



Neutral
(15)



Medium
(13)



Classic
Mahogany
(21)



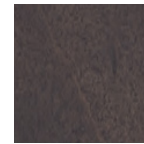
White Wash II
(30)



Espresso
(23)



Transparent
Black
(29)



Graphite
(25)

Quick Links /

View 4 Leg Table

View Radiant Base Table

View Dome Base Table

View Bar Dome Base Table

View Tandem Dome Base Table

Due to limitations of the color printing process these finish samples should be considered representative only. For larger finish samples, please contact Leland Customer Experience at (800) 859-7510.

Parfait

LELAND

Semi-Transparent Wood Options; *Matte Sheen*



Arctic II
(16M)



Ink II
(18M)



Limelight
(33M)



Caribbean II
(48M)



Soda Red
(35M)



Tangerine
(36M)



Ice Blue
(47M)

SOLIDS



Oxford II
(49M)



Dolphin II
(50M)

[Quick Links /](#)

[View 4 Leg Table](#)

[View Radiant Base Table](#)

[View Dome Base Table](#)

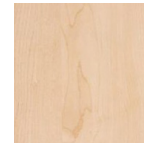
[View Bar Dome Base Table](#)

[View Tandem Dome Base Table](#)

Due to limitations of the color printing process these finish samples should be considered representative only. For larger finish samples, please contact Leland Customer Experience at (800) 859-7510.

Laminate

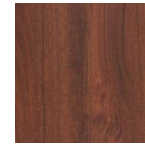
To simplify your selection, the following laminates are pre-approved standards.
 Don't see what you want? [Click here for all available laminates](#)



Kensington Maple
Wilsonart®
(10776-60)



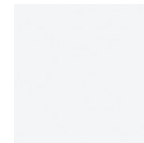
Huntington Maple
Wilsonart®
(7929-38)



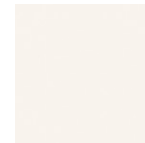
Windsor
Mahogany
Wilsonart®
(7039-60)



Jewel Mahogany
Pionite®
(WY351)



Designer White
Wilsonart®
(D354-60)



Alabaster
Wilsonart®
(D431-60)



Desert Beige
Formica®
(899-58)



Platinum
Wilsonart®
(D315-60)



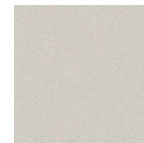
Citadel
Formica®
(1097-58)



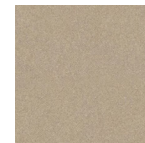
Slate Grey
Wilsonart®
(D91-60)



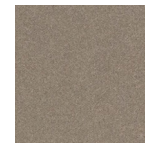
Black
Pionite®
(SE101)



Shadow Zephyr
Wilsonart®
(4857-60)



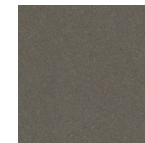
Desert Zephyr
Wilsonart®
(4841-60)



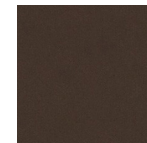
Canyon Zephyr
Wilsonart®
(4842-60)



Misted Zephyr
Wilsonart®
(4843-60)



Twilight Zephyr
Wilsonart®
(4845-60)



Morro Zephyr
Wilsonart®
(4846-60)

Quick Links /

[View 4 Leg Table](#)

[View Radiant Base Table](#)

[View Dome Base Table](#)

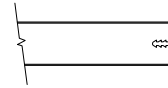
[View Bar Dome Base Table](#)

[View Tandem Dome Base Table](#)

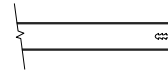
Due to limitations of the color printing process these finish samples should be considered representative only. For larger finish samples, please contact Leland Customer Experience at (800) 859-7510.



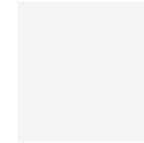
TABLE EDGE DETAIL



(13/ 16 " flat PVC)



(3/4" flat PVC)



White
(W)



Grey
(G)



Black
(B)

TABLE EDGE DETAIL



(1" beveled plywood)



(1" flat plywood)



(13/ 16 " back beveled wood)

AVAILABLE WOOD FINISHES

[View transparent](#)/[View semi-transparent](#)

[Quick Links /](#)

[View 4 Leg Table](#)

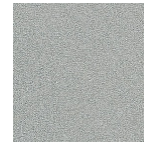
[View Radiant Base Table](#)

[View Dome Base Table](#)

[View Bar Dome Base Table](#)

[View Tandem Dome Base Table](#)

Due to limitations of the color printing process these finish samples should be considered representative only. For larger finish samples, please contact Leland Customer Experience at (800) 859-7510.



Sterling
(ST)



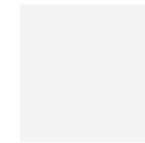
Warm Grey
(WG)



Cool Grey
(CG)



Black
(B)



White
(W)



Matte Gold Rush
(MGR)



Matte Mercury
(MMR)



Matte Mineral
(MMN)



Matte Burnish
(MBN)



Matte Foundry
(MFN)



Matte New
Penny
(MNP)

[Quick Links /](#)

[View 4 Leg Table](#)

[View Radiant Base Table](#)

[View Dome Base Table](#)

[View Bar Dome Base Table](#)

[View Tandem Dome Base Table](#)

Due to limitations of the color printing process these finish samples should be considered representative only. For larger finish samples, please contact Leland Customer Experience at (800) 859-7510.

LELAND

5695 Eagle Drive, SE
Grand Rapids,
Michigan 49512
616-975-9260
lelandfurniture.com