

---

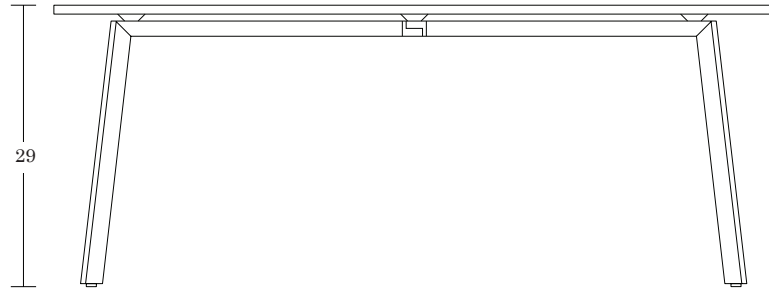
LELAND

# Fast Table

## Specifications & Finishes



January 2023



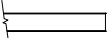
Base Size C / FBC

## SPECIFICATIONS

### Top Color

Laminate - Standards from Formica®, Wilsonart®, Pionite®, Nevamar® [View here](#)

### Edge Type

1 Vinyl Edges  (3/4" 3mm flat PVC)

### Edge Color [View here](#)

Black, Grey, Pewter, Saddle, Stone, Truffle and White

### Base Finish [View here](#)

Powder Coat Finishes

### Glide Option

Standard

### Modest Panel Color

Standard: Grey, Additional Options for Orders 20+: Black and White

### Auxiliary Options

Ganging Device (two per set)

Transport Trolley accommodates up to 6 bases and 6 tops

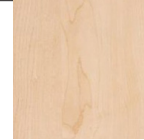
### Top and Base Size Options

Round		Square		Rectangle	
	Fits Base		Fits Base		Fits Base
48 Dia	A	42 x 42	A	24 x 48	A
54 Dia	A	48 x 48	B	30 x 48	A
60 Dia	B	54 x 54	C	24 x 60	B
				30 x 60	B
				24 x 72	C
				30 x 72	C

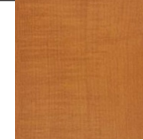
# Fast

## Laminate

Here is a wide selection of most commonly used laminates.  
Don't see what you want? [Click here](#) for more options..



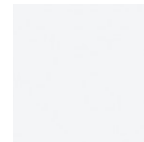
Kensington Maple  
Wilsonart®  
(10776-60)



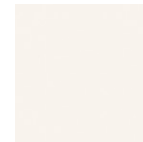
Huntington Maple  
Wilsonart®  
(7929-38)



Jewel Mahogany  
Pionite®  
(WY351)



Designer White  
Wilsonart®  
(D354-60)



Alabaster  
Wilsonart®  
(D431-60)



Desert Beige  
Formica®  
(899-58)



Platinum  
Wilsonart®  
(D315-60)



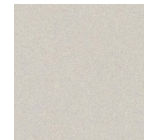
Citadel  
Formica®  
(1097-58)



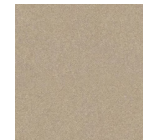
Slate Grey  
Wilsonart®  
(D91-60)



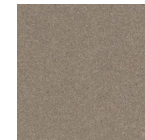
Black  
Pionite®  
(SE101)



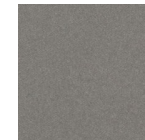
Shadow Zephyr  
Wilsonart®  
(4857-60)



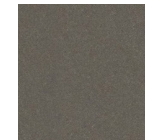
Desert Zephyr  
Wilsonart®  
(4841-60)



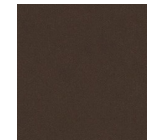
Canyon Zephyr  
Wilsonart®  
(4842-60)



Misted Zephyr  
Wilsonart®  
(4843-60)



Twilight Zephyr  
Wilsonart®  
(4845-60)



Morro Zephyr  
Wilsonart®  
(4846-60)

[Quick Links /  
View Table](#)

[Quick Links /Order Wilsonart](#)

[Quick Links /Order Pionite](#)

[Quick Links / Order Formica](#)

Due to limitations of the color printing process these finish samples should be considered representative only. For larger finish samples, please contact Leland Customer Experience at (800) 859-7510.

# Fast

## Edges

LELAND



Table Edge Detail



(3/4" 3mm flat PVC) (3/4" 3mm flat PVC)



Saddle  
(SL)



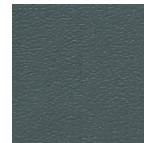
Grey  
(G)



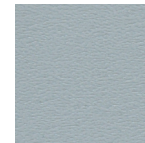
White  
(W)



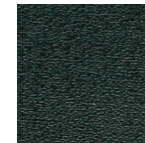
Truffle  
(TF)



Stone  
(SN)



Pewter  
(PW)



Black  
(B)

Quick Links /  
[View Table](#)

Due to limitations of the color printing process these finish samples should be considered representative only. For larger finish samples, please contact Leland Customer Experience at (800) 859-7510.

# Fast

Powder Coat

LELAND



Matte Gold Rush  
(MGR)



Matte Mercury  
(MMR)



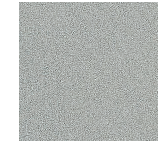
Matte Mineral  
(MMN)



Matte Burnish  
(MBN)



Matte Foundry  
(MFN)



Sterling  
(ST)



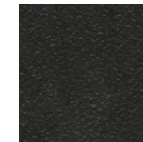
Dolphin Textured  
(DLT)



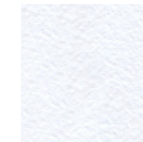
Oxford Textured  
(OXT)



Grey Textured  
(GT)



Black Textured  
(BT)



White Textured  
(WT)

[Quick Links /](#)

[View Table](#)

Due to limitations of the color printing process these finish samples should be considered representative only. For larger finish samples, please contact Leland Customer Experience at (800) 859-7510.

---

# LELAND

**5695 Eagle Drive, SE**  
**Grand Rapids,**  
**Michigan 49512**  
**616-975-9260**  
**[lelandfurniture.com](http://lelandfurniture.com)**